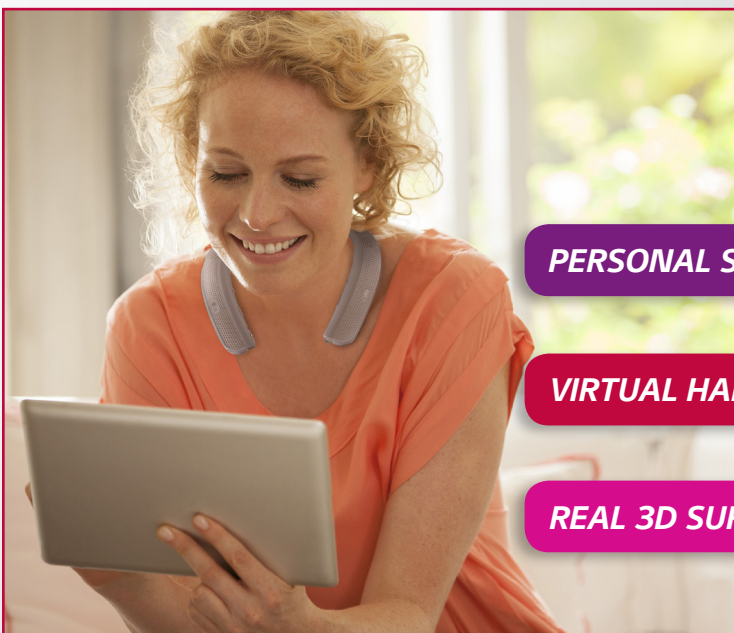


EXPERIENCE PERSONAL SURROUND SOUND IMMERSION

LG TONE Studio™

Experience true surround sound anywhere with the LG TONE Studio™ wearable speaker. Combining portability and immersion with rich volume and theater-quality sound, the LG TONE Studio™ is a unique around-the-neck Bluetooth® wearable speaker engineered to provide clear personal surround sound, perfect for gaming, movies, music and phone calls. The real 3D Surround is delivered through four speakers arranged in ideal positions on the neckband to create the first-ever DTS®-tuned sound experience designed for a wearable headset. Plus, with Wearable Bass™ special vibration speakers, allow your body to feel the sound of cinema-like quality bass as if you are right there in the action.



PERSONAL SURROUND SOUND EXPERIENCE

VIRTUAL HAPTIC VIBRATION SPEAKERS

REAL 3D SURROUND SOUND

Compatible with Android™, Apple®, Windows® and Bluetooth® devices.

EXPERIENCE PERSONAL SURROUND SOUND IMMERSION

Key Features

PERSONAL SURROUND EXPERIENCE

Combines immersion and portability with high-quality sound and rich volume

REAL 3D SURROUND SOUND

Four strategically placed speakers designed to deliver the best in surround sound

HAPTIC USER EXPERIENCE

Special vibration speakers engage your body in low bandwidth

SOUND DESIGNED BY DTS®

Experience the first DTS®-tuned wireless device for wearable "cinema-like" surround sound

DUAL PLAY

Connect two LG TONE Studio™ devices simultaneously

SURROUND SOUND ZONE

Creates a personal listening experience, also useful for those who may need assistive listening while watching television or on the phone

VELVET SOUND™

Provides 32-bit DAC for Hi-Fi sound (earphone 32-bit; speaker 24-bit)

Specifications

- Music Listening Time: Up to 35 Hours (Earphone Mode); Up to 6 Hours (Speaker Mode)
- Talk Time: Up to 40 Hours (Earphone Mode); Up to 16 Hours (Speaker Mode)
- Standby Time: Up to 61 Days
- Weight: 4.4 oz.
- Bluetooth® Profiles: A2DP, AVRCP, HFP, HSP
- Operating Range: 33 ft.

In the Box

- LG TONE Studio™ (HBS-W120)
- Micro USB Charging Cable (AC Adapter Head NOT Included)
- Extra Ear Gels (1 Set – Small)
- User Manual
- Warranty Card

Additional Features

- Four-speaker design
- 32-bit DAC for Hi-Fi sound (Earphone 32-bit; Speaker 24-bit)
- Clear Voice for crisper dialogue
- Compatible with Bluetooth® audio enabled LG Smart TVs running WebOS*

* TV must be manufactured from 2015 onward. For other Smart TV compatibility, please consult with the TV manufacturer.

